

ROME WASN'T BUILT IN A DAY. NEITHER WAS MONITOR.

Paradigm[®]
MONITOR SERIES 7

It took three emperors and 15 years to build Rome's colosseum, architecture that still elicits awe centuries later. And while we're not so bold as to compare the colosseum to the new Series 7, you have to admit the speakers look more than a little awesome in the backdrop of Ancient Rome. Good architecture will stand up well over time, as will good sonic architecture. Our Monitor Series 7 is a classic example. Now in its seventh iteration, each new generation is an opportunity for refinement: design innovations from our higher-priced reference lineups, reference-quality component parts, cabinets and even finishes!

We can't promise it will still be around in two thousand years, but we can promise it will play louder, plumb deeper, look smarter and sound better than any other brand in its price range.



Monitor 7

Atom Monitor

Monitor 11

Monitor 9

Mini Monitor

Not shown: Monitor Center 1, Center 3, Surround 1 and Surround 3

IN THE ARENA WITH MONITOR SERIES 7

EVEN BETTER PERFORMANCE DESPITE A 20% SMALLER FOOTPRINT

- Monitor 11 is now the size of Monitor 9 v.6.
- Monitor 9 is now the size of Monitor 7 v.6.
- Monitor 7 is a brand new size — 20% smaller.
- No change to the size of bookshelf models.
- Center channels are slightly smaller to suit today's A/V furniture.
- New low-profile Surround 1 and Surround 3 are a compact, extremely easy-to-place design both sonically and physically.

Honeycomb corner architecture on grilles



THE ROMAN PLINTH

New Monitor floorstanders sit on a plinth, a sleek and secure base that provides stability for the slimmer footprint. An aesthetically pleasing columnar look (the inspiration behind our Roman colosseum approach!), the plinth removes the need for outrigger feet.

Heritage
Cherry

Black Ash

A MORE SONICALLY TRANSPARENT GRILLE DESIGN

- New self-aligning magnetic grille assemblies offer fit-like-a-glove contact: Hold the grille close to the baffle and presto, the powerful dual magnets will 'pull' the grille perfectly into place.
- Honeycomb architecture removes the opportunity for sound to lie captive in grille corners ... a far more spacious and transparent sonic presentation emerges.
- Precision-engineered edge radius prevents the physical frame of the grille from inducing sound-coloring edge diffraction.

Grilles on or grilles off, Monitor speakers sound equally as good!

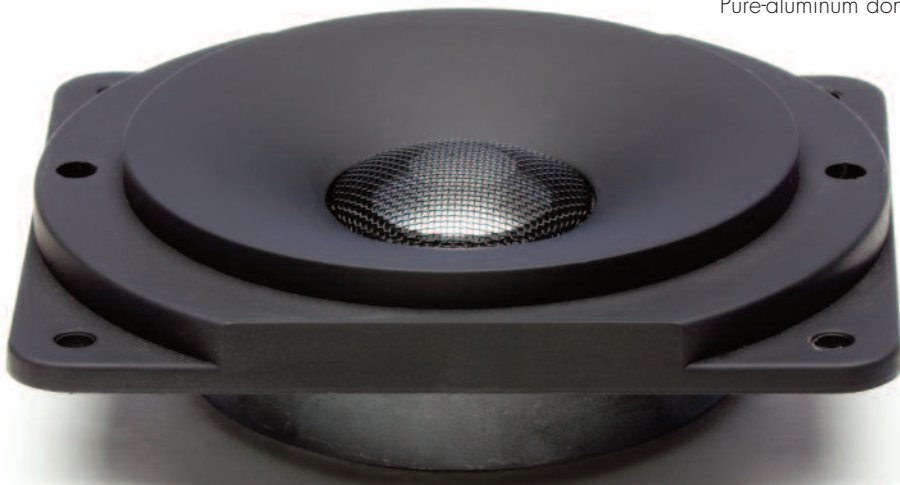
TRENDS IN COLOR

After studying furniture trends around the world our research showed **Heritage Cherry** to be a winner. It's now on the Monitor menu. Black is always chic, always complementary, so Black Ash continues as a finish but ... with a rich new wood grain, deeper and more realistic than any previous iteration.

KEYSTONE ACOUSTICS: MONITOR SERIES 7

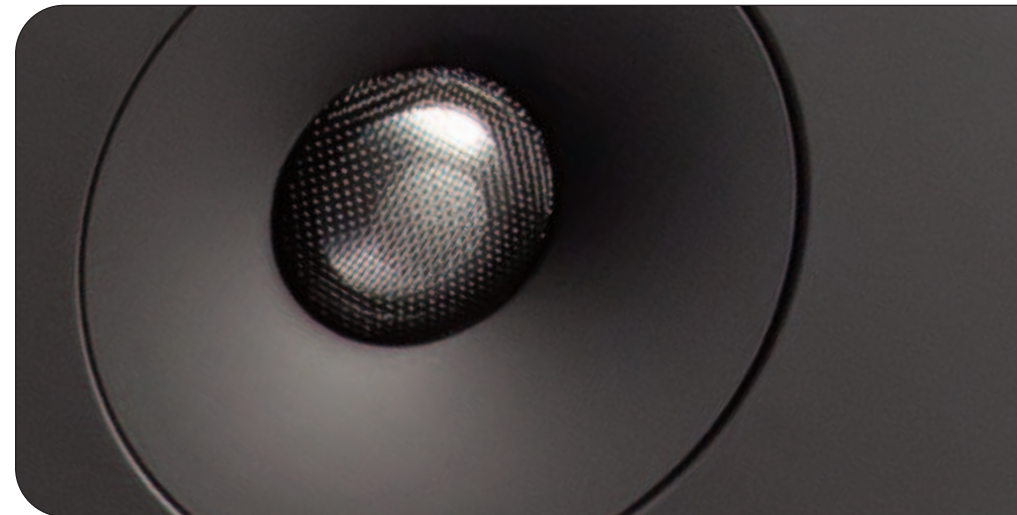
The whole point of being as passionate about R&D as Paradigm are the many advantages that come with having your own R&D center, anechoic chamber and double blind listening rooms. It means twists and turns, tweaks and testing along the way, all in the name of making sound better with each new generation of speakers!

Pure-aluminum dome



ABOUT THE TWEETERS

Series 7 tweeters are pure aluminum (PAL™) vs. the titanium of earlier generations, ferro-fluid cooled and damped. Highs are more soaring and spacious, crystal clear and undiluted even at the highest output. Note the new wire mesh tweeter guard (you've seen this in our ultimate high-end Signature Series). Not simply protection for the PAL tweeter, the mesh and WaveGuide™ technology do a superb job of dispersing sound across a wide listening area.



Mesh tweeter guard and WaveGuide™

ABOUT BASS/MID & BASS DRIVERS

Loads of Reference technology makes an appearance and where appropriate, cone elements were FEA optimized for performance.

- **S-PAL™ Satin-Anodized Pure-Aluminum Bass/Midrange Cones.** First seen in our Paradigm Reference lineup, with very high stiffness-to-mass ratio and outstanding internal damping. The result? Remarkable midrange clarity, superb extended bass response and freedom from unwanted resonances and distortions.



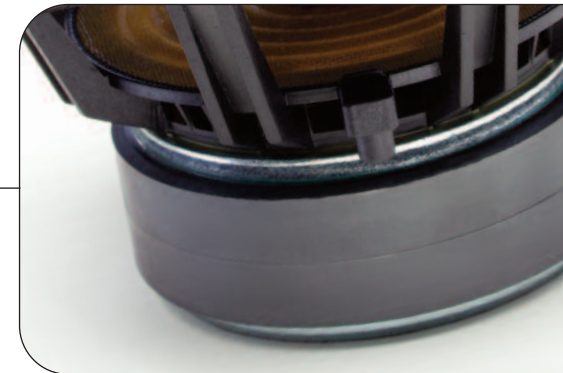
Sealed dedicated midrange chamber

- **Sonic Solidarity!** A sealed chamber behind the dedicated midrange driver, made of GRIP™ glass-reinforced injection-molded polymer. The design prevents the massive air pressure generated by the woofer from coloring sound output.

- **Advanced Carbon-Infused Injection-Molded Polypropylene Bass Cones.** The high mineral content and injection-molding process have created a durable and rigid cone with affords us bragging rights for cone consistency and repeatability.



- **Long-Travel Motor/Magnet Structures.** Despite fewer drivers in some models, floorstanding and center channel speakers actually play deeper. This is in part attributable to the advanced structures: high-temperature copper or aluminum wire voice coils wound on Kapton® formers, oversize magnets and FEA optimized pole piece/top plate.



- **The Ideal Response Characteristics** of our Monitor Series drivers are promoted through sophisticated crossover networks aligned with reference-quality components that include: polypropylene film or bipolar electrolytic capacitors, air core and laminated core inductors and high-power resistors. Crossover topologies are first- and second-order with corresponding acoustic slopes of second- and third-order providing optimal bandwidth and seamless integration as the drivers cross over.

- **New Foam Rubber/Elastomer Surrounds and Advanced Nomex® Spiders.** (Reference Studio series geometry!) help achieve that play loud AND play deep effect by expanding to allow the cone to travel not only farther but more freely, with appropriate cone control of course.



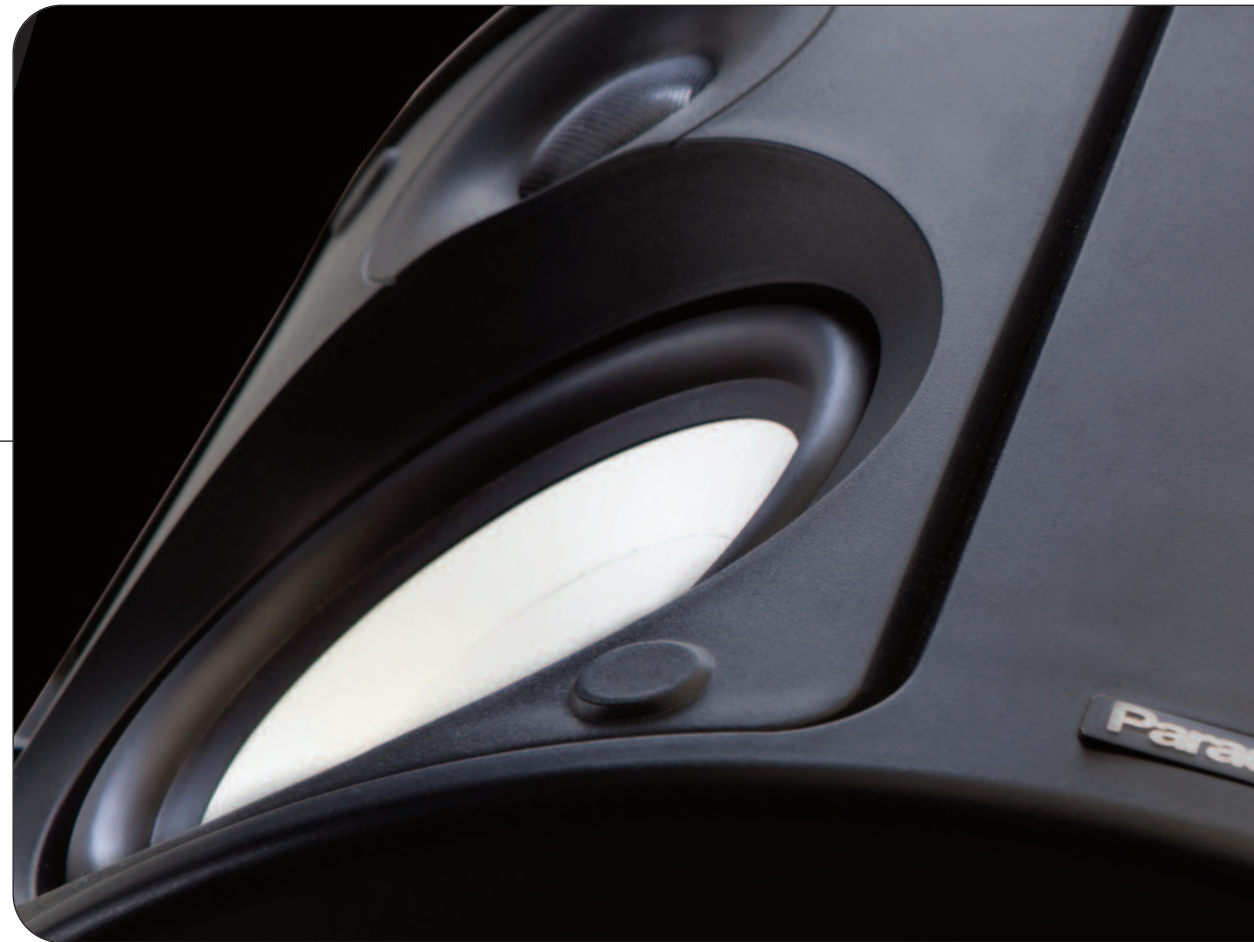
NOT JUST A NEW BAFFLE, A WHOLE NEW BAFFLE DESIGN

- A clean aesthetic ... nothing to see but the beautiful drivers, no screws or fasteners visible.
- Thick and rigid 3/4" MDF across the line-up.
- FEA-optimized (including stress analysis) to overcome the limitations of the physical materials. A modal frequency analysis allowed us to deliver the most resonance-, vibration- and coloration-free Monitor Series cabinet baffle to date.
- Critically-tuned to the rest of the cabinet.
- Rap on the baffle ... you'll hurt nothing but your knuckles!

GLADIATORS OF SURROUND TECHNOLOGY

HIGH-PERFORMANCE LOW-PROFILE BI-DIRECTIONAL DESIGN

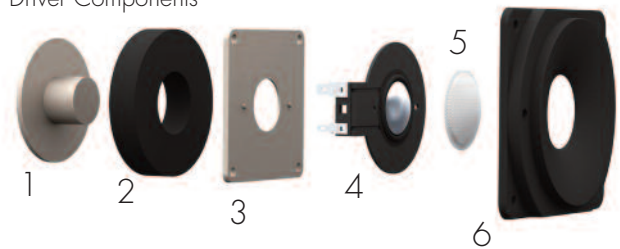
- Will appeal to the audiophile eager for an affordable high-end 5.1 music and home theater experience that includes Paradigm's sought-after "surrounded-by-sound" experience in a dedicated high-performance surround speaker of compact dimensions.
- The low-profile is application-friendly: perfectly suited for today's multi-purpose listening spaces.
- In recording studios, discrete multichannel mixing is the order of the day. Bi-directional in nature, the new coherent surround technology reproduces the surround experience exactly as the sound engineers envisioned. The speakers add size, depth and dimension to the soundstage while enveloping you in non-localized sound.
- The bidirectional technology also ensures extreme placement flexibility! It is more forgiving in areas where room dimensions, room characteristics and/or room configuration (or all of these!) may not be optimal for a music and home theater setup. In multi-use rooms where ideal surround speaker placement is neither possible or practical, Monitor Surrounds should be your first response.
- We call them surrounds, but they're also ideal as rear speakers in a 7.1 setup.



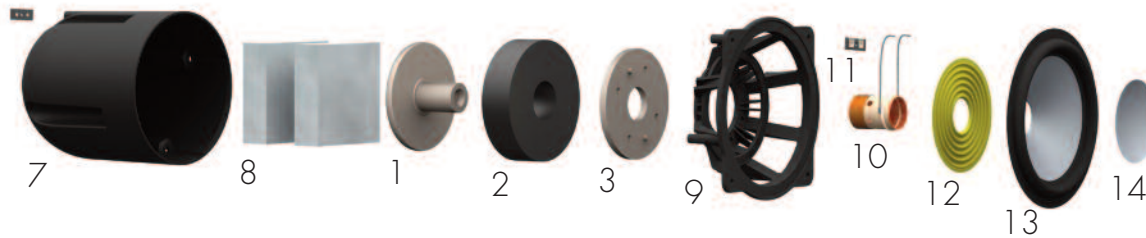
THE BUILDING BLOCKS: MONITOR DRIVERS

- 1 Pole piece
- 2 Oversize ceramic/ferrite magnet
- 3 Top plate
- 4 Pure-aluminum dome (one-piece dome and voice coil)
- 5 Mesh tweeter guard
- 6 GRIP™ WaveGuide™ coupling
- 7 Sealed chamber (on dedicated midrange driver)
- 8 High-loss damping pads
- 9 GRIP™ glass-reinforced injection-molded co-polymer chassis
- 10 Copper or aluminum wire voice coils wound on Kapton® formers (varies by model)
- 11 Terminal
- 12 Nomex® spider
- 13 Satin-anodized pure-aluminum bass/midrange and dedicated midrange cones and dedicated midrange cones
- 14 Satin-anodized aluminum or polypropylene dustcaps (varies by model)
- 15 Injection-molded carbon-infused polypropylene bass cone with high mica content

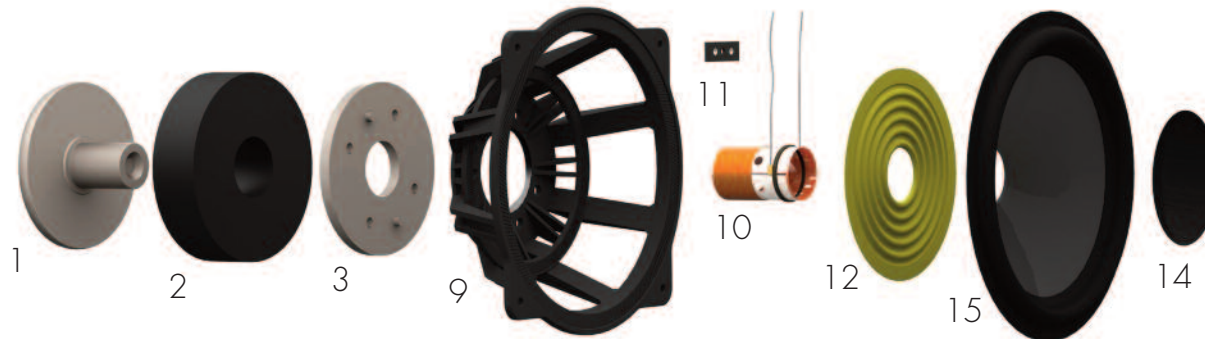
High-Frequency Driver Components



Bass/Midrange and Dedicated Midrange Driver Components



Bass Driver Components



A STUDY IN THE MECHANICAL ARTS



ATOM MONITOR

Design

2-driver, 2-way bass reflex, quasi-3rd-order resistive port, bookshelf / stand-mounted

Crossover

2nd-order electro-acoustic at 2.0 kHz

High-Frequency Driver

25-mm (1 in) PAL™ pure-aluminum dome tweeter, ferro-fluid cooled and damped

Midrange Driver

N/A

Bass / Midrange Driver

140-mm (5-1/2 in) S-PAL™ satin-anodized pure-aluminum cone, 25-mm (1 in) high-temperature voice-coil, oversize ceramic / ferrite magnets, GRIP™ glass-reinforced injection-molded polymer chassis

Bass Driver

N/A

Low-Frequency Extension*

50 Hz

Frequency Response

On-Axis: ±2 dB from 86 Hz – 22 kHz
30° Off-Axis: ±2 dB from 86 Hz – 18 kHz

Sensitivity – Room / Anechoic

90 dB / 87 dB

Suitable Amplifier Power

15 – 80 watts

Maximum Input Power†

50 watts

Impedance

Compatible with 8 ohms

Dimensions** (h x w x d)

28.2 cm x 16.8 cm x 22.5 cm
11 in x 6-5/8 in x 8-7/8 in

Weight (unpacked)

4.8 kg / 10.5 lb per speaker

Finishes

Black Ash, Heritage Cherry

Paradigm Stands (sold sep.)

S-30, J-29

MINI MONITOR

Design

2-driver, 2-way bass reflex, quasi-3rd-order resistive port bookshelf / stand-mounted

Crossover

2nd-order electro-acoustic at 2.0 kHz

High-Frequency Driver

25-mm (1 in) PAL™ pure-aluminum dome tweeter, ferro-fluid cooled and damped

Midrange Driver

N/A

Bass / Midrange Driver

165-mm (6-1/2 in) S-PAL™ satin-anodized pure-aluminum cone, 25-mm (1 in) high-temperature voice-coil, oversize ceramic / ferrite magnets, GRIP™ glass-reinforced injection-molded polymer chassis

Bass Driver

N/A

Low-Frequency Extension*

42 Hz

Frequency Response

On-Axis: ±2 dB from 75 Hz – 22 kHz
30° Off-Axis: ±2 dB from 75 Hz – 18 kHz

Sensitivity – Room / Anechoic

90 dB / 87 dB

Suitable Amplifier Power

15 – 100 watts

Maximum Input Power†

80 watts

Impedance

Compatible with 8 ohms

Dimensions** (h x w x d)

34.3 cm x 19.4 cm x 26.5 cm
13-1/2 in x 7-5/8 in x 10-1/2 in

Weight (unpacked)

7.7 kg / 17 lb per speaker

Finishes

Black Ash, Heritage Cherry

Paradigm Stands (sold sep.)

S-26, J-29



MONITOR 7

Design
3-driver, 2-1/2-way bass reflex,
quasi-3rd-order resistive port, floorstanding model

Crossover
3rd-order electro-acoustic at
2.0 kHz; 3rd-order electro-acoustic
at 700 Hz (lower bass driver)

High-Frequency Driver
25-mm (1 in) PAL™ pure-aluminum dome
tweeter, ferro-fluid cooled and damped

Midrange Driver
N/A

Bass / Midrange Driver
140-mm (5-1/2 in) S-PAL™
satin-anodized pure-aluminum cone,
25-mm (1 in) high-temperature
voice-coil, oversize ceramic / ferrite
magnets, GRIP™ glass-reinforced
injection-molded polymer chassis

Bass Driver
140-mm (5-1/2 in) carbon-infused polypropylene
cone, 25-mm (1 in) high-temperature voice-coils,
oversize ceramic / ferrite magnets, GRIP™
glass-reinforced injection-molded polymer chassis

Low-Frequency Extension*
34 Hz

Frequency Response
On-Axis: ±2 dB from 48 Hz – 22 kHz
30° Off-Axis: ±2 dB from 48 Hz – 18 kHz

Sensitivity – Room / Anechoic
91 dB / 88 dB

Suitable Amplifier Power
15 – 180 watts

Maximum Input Power†
130 watts

Impedance
Compatible with 8 ohms

Dimensions (h x w x d)**
91.6 cm x 17.5 cm x 22.9 cm
36 in x 6-7/8 in x 9 in

Weight (unpacked)
14.8 kg / 32.6 lb per speaker

Finishes
Black Ash, Heritage Cherry

Paradigm Stands (sold sep.)
N/A



MONITOR 9

Design
4-driver, 2-1/2-way bass reflex,
quasi-3rd-order resistive port, floorstanding model

Crossover
3rd-order electro-acoustic at
2.0 kHz; 2nd-order electro-acoustic
at 700 Hz (lower bass drivers)

High-Frequency Driver
25-mm (1 in) PAL™ pure-aluminum dome
tweeter, ferrofluid cooled and damped

Midrange Driver
N/A

Bass / Midrange Driver
140-mm (5-1/2 in) S-PAL™
satin-anodized pure-aluminum cone,
25-mm (1 in) high-temperature
voice-coil, oversize ceramic / ferrite
magnets, GRIP™ glass-reinforced
injection-molded polymer chassis

Bass Driver(s)
Two 140-mm (5-1/2 in) carbon-infused polypropylene
cones, 25-mm (1 in) high-temperature voice-coils,
oversize ceramic / ferrite magnets, GRIP™
glass-reinforced injection-molded polymer chassis

Low-Frequency Extension*
31 Hz

Frequency Response
On-Axis: ±2 dB from 46 Hz – 22 kHz
30° Off-Axis: ±2 dB from 46 Hz – 18 kHz

Sensitivity – Room / Anechoic
91 dB / 88 dB

Suitable Amplifier Power
15 – 200 watts

Maximum Input Power†
150 watts

Impedance
Compatible with 8 ohms

Dimensions (h x w x d)**
101.6 cm x 17.5 cm x 26.5 cm
40 in x 6-7/8 in x 10-1/2 in

Weight (unpacked)
19.1 kg / 42 lb per speaker

Finishes
Black Ash, Heritage Cherry

Paradigm Stands (sold sep.)
N/A

MONITOR 11

Design

5-driver, 3-way bass reflex, quasi-3rd-order resistive port, floorstanding model

Crossover

3rd-order electro-acoustic at 2.2 kHz; 2nd-order electro-acoustic at 700 Hz (lower bass drivers)

High-Frequency Driver

25-mm (1 in) PAL™ pure-aluminum dome tweeter, ferro-fluid cooled and damped

Midrange Driver

140-mm (5-1/2 in) S-PAL™ satin anodized pure-aluminum cone, ferro-fluid cooled and damped, 25-mm (1 in) high-temperature voice-coil, oversize ceramic / ferrite magnets, GRIP™ glass-reinforced injection-molded polymer chassis, separate sealed driver chamber

Bass / Midrange Driver

N/A

Bass Driver(s)

Three 165-mm (6-1/2 in) carbon-infused polypropylene cones, 25-mm (1 in) high-temperature voice-coils, oversize ceramic / ferrite magnets, GRIP™ glass-reinforced injection-molded polymer chassis

Low-Frequency Extension*

30 Hz

Frequency Response

On-Axis: ±2 dB from 42 Hz – 22 kHz
30° Off-Axis: ±2 dB from 42 Hz – 18 kHz

Sensitivity – Room / Anechoic

93 dB / 90 dB

Suitable Amplifier Power

15 – 250 watts

Maximum Input Power†

180 watts

Impedance

Compatible with 8 ohms

Dimensions** (h x w x d)

105.2 cm x 20.0 cm x 34.3 cm
41-1/2 in x 7-7/8 in x 13-1/2 in

Weight (unpacked)

25.1 kg / 55.3 lb per speaker

Finishes

Black Ash, Heritage Cherry

Paradigm Stands (sold sep.)

N/A



CENTER 1

Design

4-driver, 3-way center channel

Crossover

2nd-order electro-acoustic at 3.0 kHz;
2nd-order electro-acoustic at 550 Hz (bass drivers)

High-Frequency Driver

25-mm (1 in) PAL™ pure-aluminum dome tweeter, ferro-fluid cooled and damped

Midrange Driver

90-mm (3-1/2 in) S-PAL™ satin-anodized pure-aluminum cone, ferro-fluid cooled and damped, 25-mm (1 in) high-temperature voice-coil, oversize ceramic / ferrite magnets, GRIP™ glass-reinforced injection-molded polymer chassis

Bass / Midrange Driver

N/A

Bass Driver(s)

Two 140-mm (5-1/2 in) carbon-infused polypropylene cones, 25-mm (1 in) high-temperature voice-coils, oversize ceramic / ferrite magnets, GRIP™ glass-reinforced injection-molded polymer chassis

Low-Frequency Extension*

49 Hz

Frequency Response

On-Axis: ±2 dB from 75 Hz – 22 kHz
30° Off-Axis: ±2 dB from 75 Hz – 18 kHz

Sensitivity – Room / Anechoic

92 dB / 89 dB

Suitable Amplifier Power

15 – 120 watts

Maximum Input Power†

80 watts

Impedance

Compatible with 8 ohms

Dimensions** (h x w x d)

18.3 cm x 45.1 cm x 26.5 cm
7-1/4 in x 11-3/4 in x 10-1/2 in

Weight (unpacked)

10.5 kg / 25 lb per speaker

Finishes

Black Ash, Heritage Cherry

Paradigm Stands (sold sep.)

N/A

CENTER 3

Design

4-driver, 3-way center channel

Crossover

2nd-order electro-acoustic at 2.2 kHz;
2nd-order electro-acoustic at 600 Hz (bass drivers)

High-Frequency Driver

25-mm (1 in) PAL™ pure-aluminum dome
tweeter, ferro-fluid cooled and damped

Midrange Driver

115-mm (4-1/2 in) S-PAL™
satin-anodized pure-aluminum cone,
ferro-fluid cooled and damped,
25-mm (1 in) high-temperature voice-coil,
oversize ceramic / ferrite magnets, GRIP™
glass-reinforced injection-molded polymer chassis

Bass / Midrange Driver

N/A

Bass Driver(s)

Two 165-mm (6-1/2 in) carbon-infused polypropylene
cones, 25-mm (1 in) high-temperature voice-coils,
oversize ceramic / ferrite magnets, GRIP™
glass-reinforced injection-molded polymer chassis

Low-Frequency Extension*

46 Hz

Frequency Response

On-Axis: ±2 dB from 66 Hz – 22 kHz
30° Off-Axis: ±2 dB from 66 Hz – 18 kHz

Sensitivity – Room / Anechoic

93 dB / 90 dB

Suitable Amplifier Power

15 – 175 watts

Maximum Input Power†

120 watts

Impedance

Compatible with 8 ohms

Dimensions** (h x w x d)

20.0 cm x 53.7 cm x 29.8 cm
7-7/8 in x 21-1/8 in x 11-3/4 in

Weight (unpacked)

12.9 kg / 28.5 lb per speaker

Finishes

Black Ash, Heritage Cherry

Paradigm Stands (sold sep.)

J-18C



SURROUND 1

Design

4-driver, 2-way bi-directional surround/rear

Crossover

2nd-order electro-acoustic at 2.0 kHz

High-Frequency Driver

Two 25-mm (1 in) PAL™ pure-aluminum dome
tweeters, ferro-fluid cooled and damped

Bass / Midrange Driver

Two 110-mm (4-1/2 in) MHC™
minimum-mass injection-molded co-polymer
polypropylene cones, 25-mm (1 in)
voice-coils, oversize ceramic / ferrite
magnets, steel chassis

Low-Frequency Extension*

71 Hz

Frequency Response

±2 dB from 120 Hz – 20 kHz
(bi-directional soundfield)

Sensitivity – Room / Anechoic

88 dB / 85 dB

Suitable Amplifier Power

15 – 100 watts

Maximum Input Power†

80 watts

Impedance

Compatible with 8 ohms

Dimensions** (h x w x d)

21.7 cm x 23.5 cm x 13.0 cm
8-1/2 in x 9-1/4 in x 5-1/8 in

Weight (unpacked)

3.28 kg / 7.25 lb per speaker

Finish

Black

Paradigm Stands (sold sep.)

N/A



SURROUND 3

Design

4-driver, 2-way bi-directional surround/rear

Crossover

2nd-order electro-acoustic at 2.3 kHz

High-Frequency Driver

Two 25-mm (1 in) PAL™ pure-aluminum dome
tweeters, ferro-fluid cooled and damped

Bass / Midrange Driver

Two 140-mm (5-1/2 in) S-PAL™
satin-anodized pure-aluminum cone,
25-mm (1 in) voice-coils, oversize ceramic /
ferrite magnets, GRIP™ glass-reinforced
injection-molded polymer chassis

Low-Frequency Extension*

53 Hz

Frequency Response

±2 dB from 90 Hz – 20 kHz
(bi-directional soundfield)

Sensitivity – Room / Anechoic

90 dB / 87 dB

Suitable Amplifier Power

15 – 175 watts

Maximum Input Power†

120 watts

Impedance

Compatible with 8 ohms

Dimensions** (h x w x d)

27.0 cm x 33.0 cm x 16.8 cm
10-5/8 in x 13 in x 6-5/8 in

Weight (unpacked)

6.32 kg / 13.95 lb per speaker

Finish

Black

Paradigm Stands (sold sep.)

N/A

* DIN 45 500 indicates -3 dB in a typical listening room. † With typical program source, provided the amplifier clips no more than 10% of the time.
** Heights include base (plinth) and rubber feet. Add approximately 3/4" (2.0 cm) to cabinet height with spikes installed. Add approximately 3/4" (2.0 cm) to cabinet depth with grille installed.

MONITOR SERIES 7:

**WELCOME THE
NEXT GENERATION OF
SOUND INNOVATION!**

